



CROMSON

CHAIN & SPROCKETS

Power transmission specialty



From industrial shredders to bakery equipment, meat grinders, slicers, peelers, and cutters, Cromson has a full range of chain and sprocket replacements.

cromson.com

Featured products

ANSI Roller chain in carbon and stainless steel roller chain
35 through 140 (single & double strand)
C2040 through C2100H double pitch ANSI Chain
Attachment chain configured to fit your application
Conveyor chain
Drop Forge chain
X348, X458
Full range of Sprockets in Carbon and Stainless Steel

Applications

Bakery
Proofer chain
Oven

Red Meat/Poultry
Slaughter
Bleed line
Processing lines
Decline conveyor

Dairy
Infloor conveyor
Spiral freezer



Your first choice for chain and sprocket replacements

The need for chain and sprockets in the food processing industry is as diverse as the range of machinery used. No need to shop multiple sources - the Cromson line of quality chains and sprockets provides you with the most popular replacement products built for universal applications.

For any specialized product requests beyond our chain and sprocket product offering, please contact us so that we can get it for you.



CHAIN & SPROCKETS



REDUCE YOUR DOWNTIME WITH CROMSON ROLLER CHAIN & SPROCKETS

- COST-EFFECTIVE • OFF-THE-SHELF • CONSISTENT MANUFACTURING
- MEETS OR EXCEEDS ANSI STANDARDS

FOOD & BEVERAGE



MINING



AGRICULTURE



PHARMACEUTICAL



PACKAGING



CONVEYING



MANUFACTURING

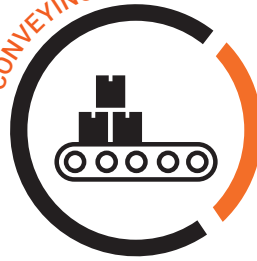


STANDARD ROLLER CHAIN **STEEL**

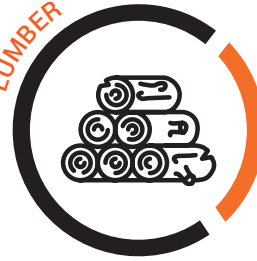
MANUFACTURING



CONVEYING



LUMBER



Chain Number	Model	Pitch (in)	ANSI Standard Minimum tensile Strength	Connecting Link	Offset Link
35RBCROM	35-1 RIV	0.375	1 760	35CLCROM	35OLCROM
40RBCROM	40-1 RIV	0.500	3 125	40CLCROM	40OLCROM
41RBCROM	41-1 RIV	0.500	1 500	41CLCROM	41OLCROM
50RBCROM	50-1 RIV	0.625	4 880	50CLCROM	50OLCROM
60RBCROM	60-1 RIV	0.750	7 030	60CLCROM	60OLCROM
80RBCROM	80-1 RIV	1.000	12 500	80CLCROM	80OLCROM
100RBCROM	100-1 RIV	1.250	19 530	100CLCROM	100OLCROM
120RBCROM	120-1 RIV	1.500	28 125	120CLCROM	120OLCROM
140RBCROM	140-1 RIV	1.750	38 280	140CLCROM	140OLCROM
160RBCROM	160-1 RIV	2.000	50 000	160CLCROM	160OLCROM
35-2RBCROM	35-2 RIV	0.375	3 520	35-2CLCROM	35-2OLCROM
40-2RBCROM	40-2 RIV	0.500	6 250	40-2CLCROM	40-2OLCROM
50-2RBCROM	50-2 RIV	0.625	9 760	50-2CLCROM	50-2OLCROM
60-2RBCROM	60-2 RIV	0.750	14 060	60-2CLCROM	60-2OLCROM
80-2RBCROM	80-2 RIV	1.000	25 000	80-2CLCROM	80-2OLCROM
100-2RBCROM	100-2 RIV	1.500	29 060	100-2CLCROM	100-2OLCROM
120-2RBCROM	120-2 RIV	1.750	56 250	120-2CLCROM	120-2OLCROM
C2040RBCROM	C2040-1 RIV	1.000	3 125	C2040LCROM	C2040OLCROM
C2050RBCROM	C2050-1 RIV	1.250	4 880	C2050LCROM	C2050OLCROM
C2060RBCROM	C2060-1 RIV	1.500	7 030	C2060LCROM	C2060OLCROM
C2080RBCROM	C2080-1 RIV	2.000	12 500	C2080LCROM	C2080OLCROM

*All Cromson Chain made to ANSI Standards and Specifications

STANDARD ROLLER CHAIN STAINLESS STEEL



Chain Number	Model	Pitch (in)	ANSI Standard Minimum tensile Strength	Connecting Link	Offset Link
CR35SS	35-1 RIV S.S	0.375	1 550	CR35SSCL	CR35SSOL
CR40SS	40-1 RIV S.S	0.500	2 750	CR40SSCL	CR40-2SSOL
CR40-2SS	40-2 RIV S.S	0.500	3 100	CR40-2SSCL	CR40SSOL
CR41SS	41-1 RIV S.S	0.500	1 550	CR41SSCL	CR41SSOL
CR50SS	50-1 RIV S.S	0.625	4 950	CR50SSCL	CR50SSOL
CR60SS	60-1 RIV S.S	0.750	6 600	CR60SSCL	CR60SSOL
CR80SS	80-1 RIV S.S	1.000	10 600	CR80SSCL	CR80SSOL
CR100SS	100-1 RIV S.S	1.250	12 800	CR100SSCL	CR100SSOL
CR2040SS	2040-1 RIV S.S	1.000	2 750	CR2040SSCL	CR2040SSOL
CR2050SS	2050-1 RIV S.S	1.250	4 950	CR2050SSCL	CR2050SSOL
CR2060SS	2060-1 RIV S.S	1.500	6 600	CR2060SSCL	CR2060SSOL
CR2080SS	2080-1 RIV S.S	2.000	1 060	CR2080SSCL	CR2080SSOL

*All Cromson Chain made to ANSI Standards and Specifications

- Made of 304 Stainless Steel
- Optimal for: acidic & alkaline environments - washdown applications - exposure to water - high & low ranges of temperature - applications requiring corrosion resistance

STEEL & STAINLESS STEEL SPROCKETS

- Carbon steel sprockets made from C1045 steel with hardened teeth to RC 35-50
- Stainless steel sprockets made from 304 stainless
- Sprockets available in "A" plate style and "B" hub style

Model	35, 40, 41, 50, 60, 80, 100, 120, 140, 2050, 2060, 2080
Bore	Stock or finished bore
Style	Type A, type B
Bore size	1/2" to 2"

MOLYDAL LUBRICATION SOLUTIONS



20 L - Product
VEGA90820

VEGA 908 ECOFRIENDLY LUBRICANT FOR CHAINS AND CABLES

Renewable raw materials-based, used for lubrication in moist conditions.
Smooth and adherent with good anti-wear qualities.
Strong penetrative properties for homogeneous spreading of lubricant up to the centre of link shafts.
VEGA 908 contains 100% USDA certified biobased content.

TECHNICAL DATA

Operating temperature range:	RRM:	Viscosity @ 40°C:
-30°C to +140°C	100%	160 Cst



20 L - Product
VEGA6820

VEGA 68 ECOFRIENDLY CHAIN LUBRICANT

Ester-based chain oil made from renewable raw materials.
Lubrication of chains in dusty environments, slideways & cylinder rods
Highly resistant to water-washout. Pulp & paper, wood industry etc...
Designed to be used in humid conditions (resist water wash-out).

TECHNICAL DATA

Operating temperature range:	RRM:	Viscosity @ 40°C:
-30°C to +200°C	> 86%.	68 Cst.



5 L - Product
NS2505L

NS 250 HIGH TEMPERATURES CHAIN OIL

High temperatures chain oil, used in severe working conditions (heat, humidity etc).
Can be used by immersion, brush application, drip feed or by spraying. No charring residues

TECHNICAL DATA

Operating temperature range:	Viscosity @ 40°C:
-30°C to +260°C	180 Cst



5 L - Product
NS50AL5L

NS 50 AL LOW TEMPERATURE CHAIN LUBRICANT FOR INCIDENTAL CONTACT WITH FOOD

Synthetic base oil specially formulated for very low temperatures.
Low viscosity allowing for thorough penetration into the chain links.
MOSH-MOAH free lubricant.
Lubrication of transmission chains in the deep-freezing industry.
Suitable for all types of drive chains that operate in low temperature setting

TECHNICAL DATA

Operating temperature range:	Viscosity @ 40°C:
-50°C to +160°C	90 Cst

Your exclusive distributor





ATTACHMENT ROLLER CHAIN

Power transmission specialty



CROMSON is now offering standard and custom attachments for ANSI roller chain.

- Provided in reasonable minimum order volumes
- Shorter lead-times
- Available hard-to-source OEM specialty chains

These chains are available as:

- Single pitch chain
- Double pitch chain
- Hollow pin chain
- Stainless steel
- Plated and coated chains

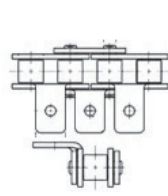
Applications:

- Packaging machines
- Bakery equipment
- Lumber Conveyors
- Printing & Labeling machines
- Automation equipment
- PPE manufacturing equipment

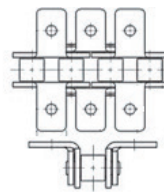


Standard Roller Chain Attachments

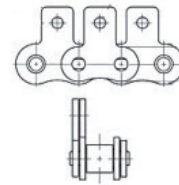
Standard roller chain attachments include A-1, K-1, SA-1, and SK-1 style attachments. These can be assembled onto the pin link (outside link), roller link (inside link) or as individual unassembled attachment links.



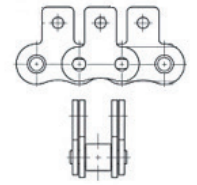
A-1 Attachment



K-1 Attachment



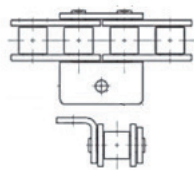
SA-1 Attachment



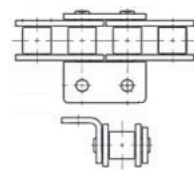
SK-1 Attachment

Wide-Contour Roller Chain Attachments

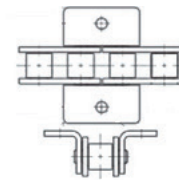
Wide contour attachments are manufactured to be the overall width of the side-plate for better stability and higher strength. This line up of attachments includes WA-1, WA-2, WK-1, WK-2, WSA-1, WSA-2, WSK-1, and WSK-2



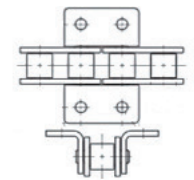
WA-1 Attachment



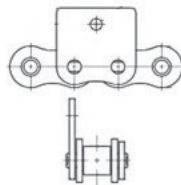
WA-2 Attachment



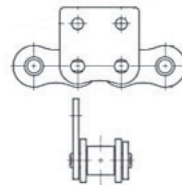
WK-1 Attachment



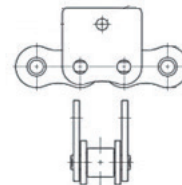
WK-2 Attachment



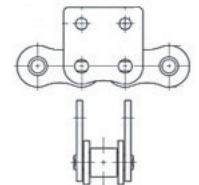
WSA-1 Attachment



WSA-2 Attachment



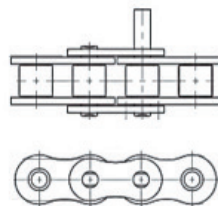
WSK-1 Attachment



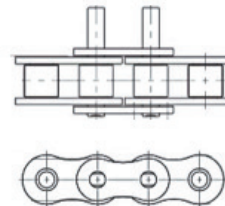
WSK-2 Attachment

Extended Pin Roller Chain Attachments

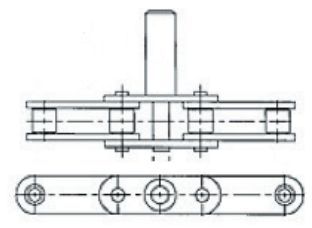
Extended pin attachments are one of the most widely used attachment type in the industry, ranging from packing to computer boards, these chains have a lot of applications.



D-1 Attachment



D-3 Attachment



D-5 Attachment



CROMSON

GEAR MOTOR

High efficiency and
interchangeability

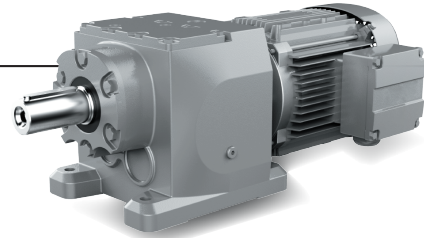


- Multiple Output & Mounting Options
- Both Metric & Inch Dimensions Available
- Grinding Process For Gears (AGMA 12 / DIN 6 Standard)
- Modular Input (IEC / NEMA / Servo/ Solid Shaft/ D-motor)
- High-end Components (Premium Double Lip Seals & Bearings)
- Various Motor Options (Inverter Duty/ Brake/ 50 & 60Hz Rated)

cromson.com

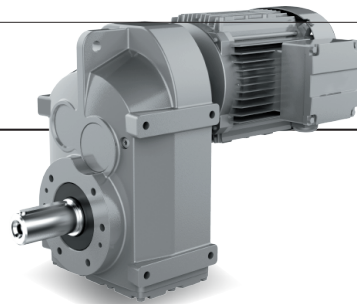
Helical Inline Gear motor

Size: 17-187
Ratio: 3.37-289.74
Input power: 0.16-340HP
Output torque: 21-500354 lb-in



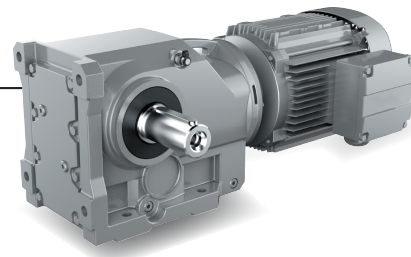
Parallel Shaft-Helical Gear motor

Size: 39-167
Ratio: 3.77-281.71
Input power: 0.16-340HP
Output torque: 30-516890 lb-in



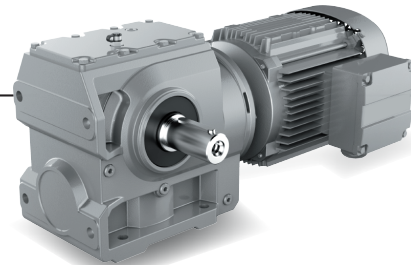
Helical-Bevel Gear motor

Size: 39-187
Ratio: 3.98-197.37
Input power: 0.16-272HP
Output torque: 88-556205 lb-in



Helical-Worm Gear motor

Size: 39-99
Ratio: 6.8-288
Input power: 0.16-30HP
Output torque: 88-43398 lb-in







CROMSON

CR WORM GEAR UNITS

Stronger against heavy loads, low noise
and high efficiency

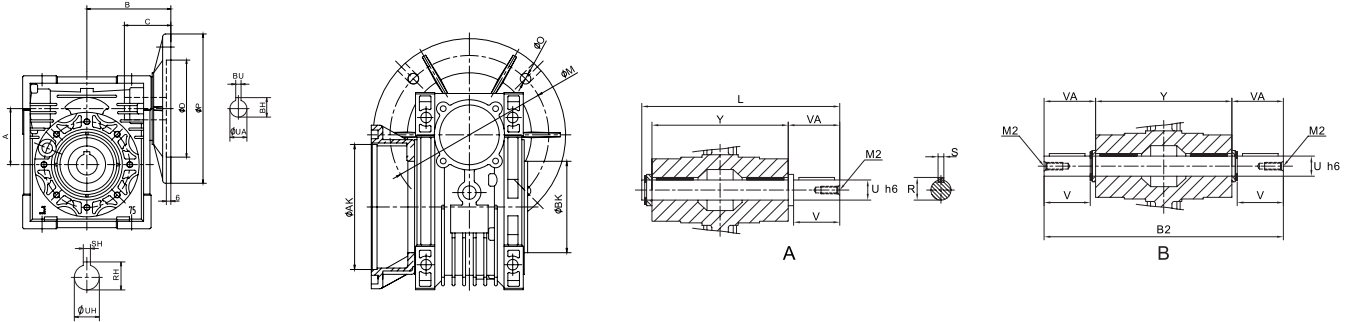


CR Series
Size: 30 -150
Input Power: 0.08 -20 HP
Output torque: 23-15580 lb-in
Ratio: 5 -100
Premium Bearings and Seals
Size 30-90 Alu housing
Size 110-150 Cast Iron

cromson.com

CR Gearbox Dimensions

IEC & Servo Adapter available



A	NEMA	B	C	UA	tolerance	BU	BH	D	P	M	O	UH	tolerance	RH	SH	AK	tolerance	BK	tolerance	V	VA	Y	U	tolerance	R	S	B2	L	M2
30	48C	67	46	12.7	+0.038 +0.013	3.18	14.2	76.2	142.9	95.3	8.2	15.88	+0.018 0	18.04	4.78	50	+0.046 0	55	0 -0.046	40	42.4	63	15.88	0 -0.011	17.8	4.78	148	112	1/4" 20
40	56C	80	55	15.88	+0.038 +0.013	4.78	18.1	114.3	165.1	149.4	10.5	19.05	+0.025 0	21.3	4.78	60	+0.046 0	60	0 -0.046	50	53	78	19.05	0 -0.011	21.1	4.76	184	138	1/4" 20
50	56C	90	55	15.88	+0.038 +0.013	4.78	18.1	114.3	165.1	149.4	10.5	25.40	+0.025 0	28.3	6.35	70	+0.046 0	70	0 -0.046	50	53.5	92	25.4	0 -0.013	28.2	6.35	199	153	3/8" 16
63	56C	105	55	15.88	+0.038 +0.013	4.78	18.1	114.3	165.1	149.4	10.5	28.58	+0.025 0	31.5	6.35	115	+0.054 0	80	0 -0.054	60	63.5	112	28.58	0 -0.013	31.2	6.35	239	183	3/8" 16
	140TC	105	59	22.23	+0.038 +0.013	4.78	24.6	114.3	165.1	149.4	10.5	28.58	+0.025 0	31.5	6.35	115	+0.054 0	80	0 -0.054	60	63.5	112	28.58	0 -0.013	31.2	6.35	239	183	3/8" 16
75	56C	126	55	15.88	+0.038 +0.013	4.78	18.1	114.3	165.1	149.4	10.5	31.75	+0.025 0	34.8	6.35	130	+0.063 0	95	0 -0.054	70	73.5	120	31.75	0 -0.013	34.5	6.35	267	202	1/2" 13
	140TC	126	59	22.23	+0.038 +0.013	4.78	24.6	114.3	165.1	149.4	10.5	31.75	+0.025 0	34.8	6.35	130	+0.063 0	95	0 -0.054	70	73.5	120	31.75	0 -0.013	34.5	6.35	267	202	1/2" 13
	180TC	126	76	28.58	+0.038 +0.013	6.35	31.5	215.9	228.6	184.2	14	31.75	+0.025 0	34.8	6.35	130	+0.063 0	95	0 -0.054	70	73.5	120	31.75	0 -0.013	34.5	6.35	267	202	1/2" 13
90	56C	143	55	15.88	+0.050 +0.013	4.78	18.1	114.3	165.1	149.4	10.5	34.93	+0.025 0	38.6	7.94	152	+0.063 0	110	0 -0.054	80	84	140	34.93	0 -0.013	38.3	7.94	309	234	1/2" 13
	140TC	143	59	22.23	+0.038 +0.013	4.78	24.6	114.3	165.1	149.4	10.5	34.93	+0.025 0	38.6	7.94	152	+0.063 0	110	0 -0.054	80	84	140	34.93	0 -0.013	38.3	7.94	309	234	1/2" 13
	180TC	143	76	28.58	+0.038 +0.013	6.35	31.5	215.9	228.6	184.2	14	34.93	+0.025 0	38.6	7.94	152	+0.063 0	110	0 -0.054	80	84	140	34.93	0 -0.013	38.3	7.94	309	234	1/2" 13
110	140TC	173	59	22.23	+0.050 +0.013	4.78	24.6	114.3	165.1	149.4	10.5	41.28	+0.025 0	45.7	9.53	170	+0.063 0	130	0 -0.063	90	94.5	155	41.28	0 -0.013	45.4	9.53	344	259	5/8" 11
	180TC	173	76	28.58	+0.038 +0.013	6.35	31.5	215.9	228.6	184.2	14	41.28	+0.025 0	45.7	9.53	170	+0.063 0	130	0 -0.063	90	94.5	155	41.28	0 -0.013	45.4	9.53	344	259	5/8" 11
	210TC	173	89	34.93	+0.050 +0.013	7.95	38.6	215.9	228.6	184.2	14	41.28	+0.025 0	45.7	9.53	170	+0.063 0	130	0 -0.063	90	94.5	155	41.28	0 -0.013	45.4	9.53	344	259	5/8" 11
130	140TC	193	59	22.23	+0.050 +0.013	4.78	24.6	114.3	165.1	149.4	10.5	44.45	+0.025 0	48.8	9.53	180	+0.063 0	180	0 -0.063	90	95	170	44.45	0 -0.013	48.7	9.53	360	275	5/8" 11
	180TC	193	76	28.58	+0.038 +0.013	6.35	31.5	215.9	228.6	184.2	14	44.45	+0.025 0	48.8	9.53	180	+0.063 0	180	0 -0.063	90	95	170	44.45	0 -0.013	48.7	9.53	360	275	5/8" 11
	210TC	193	89	34.93	+0.050 +0.01	7.95	38.6	215.9	228.6	184.2	14	44.45	+0.025 0	48.8	9.53	180	+0.063 0	180	0 -0.063	90	95	170	44.45	0 -0.013	48.7	9.53	360	275	5/8" 11
150	180TC	5	76	28.58	+0.050	6.35	31.5	215.9	229	184.2	14	50.8	+0.025	56.4	12.7	180	+0.063	180	0	100	105	200	50.8	0	56.3	12.7	410	315	3/4" 10
	210TC	215	89	34.93	+0.013	7.95	38.6	215.9	229	184.2	14	50.8	+0.025	56.4	12.7	180	+0.063	180	0	100	105	200	50.8	-0.019	56.3	12.7	410	315	3/4" 10



CROMSON

CASTERS FOR ROLLING DEVICES

Swivel, rigid and swivel with brake



Blue elastic rubber casters

Perform well on all types of surfaces

- Needle bearing
- Temperature range: -20°C to +70°C
- Non-marking wheels



Swivel

Rigid

Swivel caster with brake

Swivel caster

Product code	Wheel size in	Wheel size mm	Bolt hole pattern	Plate size	Plate mm	Fork mm	Height mm	Hole center mm	Core	Wheel size	Load capacity lbs
CRO10300S	3"	80	3-1/8" x 2-5/16"	102 x 82	3	2,5	105	80 x 60	PU	80 x 36	220
CRO10400S	4"	100	3-1/8" x 2-5/16"	102 x 82	3	2,5	128	80 x 60	PU	100 x 36	286
CRO10500S	5"	125	3-1/8" x 2-5/16"	102 x 82	3	2,5	155	80 x 60	PU	125 x 38	396
CRO10600S	6"	160	4" x 3 1/4"	135 x 110	4	3	195	110 x 80	PU	160 x 50	550

Rigid caster

Product code	Wheel size in	Wheel size mm	Bolt hole pattern	Plate size	Plate mm	Fork mm	Height mm	Hole center mm	Core	Wheel size	Load capacity lbs
CRO10300R	3"	80	3-1/8" x 2-5/16"	102 x 82	3	2,5	105	80 x 60	PU	80 x 36	220
CRO10400R	4"	100	3-1/8" x 2-5/16"	102 x 82	3	2,5	128	80 x 60	PU	100 x 36	286
CRO10500R	5"	125	3-1/8" x 2-5/16"	102 x 82	3	2,5	155	80 x 60	PU	125 x 38	396
CRO10600R	6"	160	4" x 3 1/4"	135 x 110	4	3	195	110 x 80	PU	160 x 50	550

Swivel caster with brake

Product code	Wheel size in	Wheel size mm	Bolt hole pattern	Plate size	Plate mm	Fork mm	Height mm	Hole center mm	Core	Wheel size	Load capacity lbs
CRO10302S	3"	80	3-1/8" x 2-5/16"	102 x 82	3	2,5	105	80 x 60	PU	80 x 36	220
CRO10402S	4"	100	3-1/8" x 2-5/16"	102 x 82	3	2,5	128	80 x 60	PU	100 x 36	286
CRO10502S	5"	125	3-1/8" x 2-5/16"	102 x 82	3	2,5	155	80 x 60	PU	125 x 38	396
CRO10602S	6"	160	4" x 3 1/4"	135 x 110	4	3	195	110 x 80	PU	160 x 50	550

Non-marking tread

PP: Polypropylene | PU: Polyurethane

Orange polyurethane casters

Suitable for heavier applications

- Precision ball bearings (Double ball)
- Temperature range: -20°C to +70°C
- Resistant to most cleaners and moisture



Swivel

Rigid

Swivel caster with brake

Swivel caster

Product code	Wheel size in	Wheel size mm	Bolt hole pattern	Plate size	Plate mm	Fork mm	Height mm	Hole center mm	Core	Wheel size	Load capacity lbs
CRO30400S	4"	100	3-5/16" x 2-13/16"	115 x 100	6	5	105	85 x 72	PP	100 x 50	330
CRO30500S	5"	125	3-5/16" x 2-13/16"	115 x 100	6	5	128	85 x 72	PP	125 x 50	485
CRO30600S	6"	150	3-5/16" x 2-13/16"	115 x 100	6	5	155	85 x 72	PP	150 x 50	660
CRO30800S	8"	200	3-5/16" x 2-13/16"	115 x 100	6	5	195	85 x 72	PP	200 x 50	838

Rigid caster

Product code	Wheel size in	Wheel size mm	Bolt hole pattern	Plate size	Plate mm	Fork mm	Height mm	Hole center mm	Core	Wheel size	Load capacity lbs
CRO30400R	4"	100	3-5/16" x 2-13/16"	115 x 100	6	5	105	85 x 72	PP	100 x 50	330
CRO30500R	5"	125	3-5/16" x 2-13/16"	115 x 100	6	5	128	85 x 72	PP	125 x 50	485
CRO30600R	6"	150	3-5/16" x 2-13/16"	115 x 100	6	5	155	85 x 72	PP	150 x 50	660
CRO30800R	8"	200	3-5/16" x 2-13/16"	115 x 100	6	5	195	85 x 72	PP	200 x 50	838

Swivel caster with brake

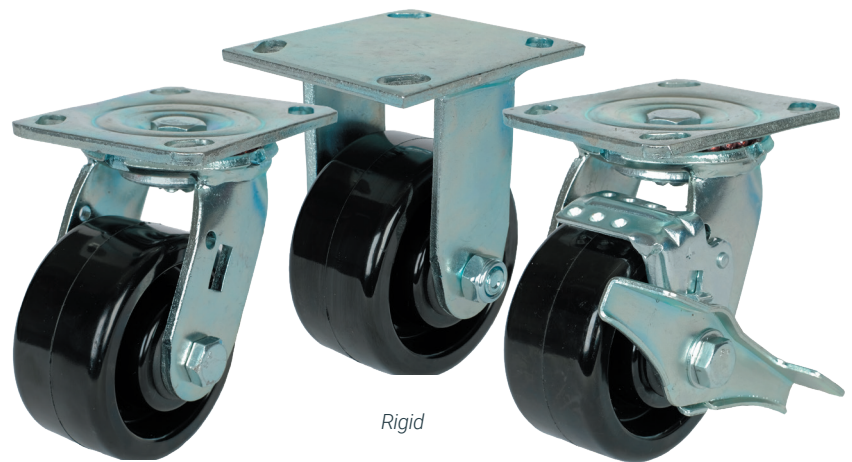
Product code	Wheel size in	Wheel size mm	Bolt hole pattern	Plate size	Plate mm	Fork mm	Height mm	Hole center mm	Core	Wheel size	Load capacity lbs
CRO30402S	4"	100	3-5/16" x 2-13/16"	115 x 100	6	5	105	85 x 72	PP	100 x 50	330
CRO30502S	5"	125	3-5/16" x 2-13/16"	115 x 100	6	5	128	85 x 72	PP	125 x 50	485
CRO30602S	6"	150	3-5/16" x 2-13/16"	115 x 100	6	5	155	85 x 72	PP	150 x 50	660
CRO30802S	8"	200	3-5/16" x 2-13/16"	115 x 100	6	5	195	85 x 72	PP	200 x 50	838

Excellent combination of strength and durability

Phenolic black casters

Designed for smooth concrete
Can be used for storage loads

- Needle bearing
- Highly resistant to oil, grease, gasoline and mild acids
- Not recommended for wet applications
- Temperature range: -40°c to +120°c



Swivel

Rigid

Swivel caster with brake

Swivel caster

Product code	Wheel size in	Wheel size mm	Bolt hole pattern	Plate size	Plate mm	Fork mm	Height mm	Hole center mm	Core	Wheel size	Load capacity lbs
CRO0400S	4"	100	2-5/8" x 3"	114 x 97	5,75	5,75	142	66.7 x 75	PP	100 x 50	550
CRO0500S	5"	125	2-5/8" x 3"	114 x 97	5,75	5,75	165	66.7 x 76.2	PP	125 x 50	700
CRO0600S	6"	150	2-5/8" x 3"	114 x 97	5,75	5,75	190	66.7 x 76.2	PP	150 x 50	800
CRO0800S	8"	200	2-5/8" x 3"	114 x 97	5,75	5,75	241	66.7 x 76.2	PP	200 x 50	900

Rigid caster

Product code	Wheel size in	Wheel size mm	Bolt hole pattern	Plate size	Plate mm	Fork mm	Height mm	Hole center mm	Core	Wheel size	Load capacity lbs
CRO0400R	4"	100	2-5/8" x 3"	114 x 97	5,75	5,75	142	66.7 x 76.2	PP	100 x 50	550
CRO0500R	5"	125	2-5/8" x 3"	114 x 97	5,75	5,75	165	66.7 x 76.2	PP	125 x 50	700
CRO0600R	6"	150	2-5/8" x 3"	114 x 97	5,75	5,75	190	66.7 x 76.2	PP	150 x 50	800
CRO0800R	8"	200	2-5/8" x 3"	114 x 97	5,75	5,75	241	66.7 x 76.2	PP	200 x 50	900

Swivel caster with brake

Product code	Wheel size in	Wheel size mm	Bolt hole pattern	Plate size	Plate mm	Fork mm	Height mm	Hole center mm	Core	Wheel size	Load capacity lbs
CRO0402S	4"	100	2-5/8" x 3"	114 x 97	5,75	5,75	142	66.7 x 76.2	PP	100 x 50	550
CRO0502S	5"	125	2-5/8" x 3"	114 x 97	5,75	5,75	165	66.7 x 76.2	PP	125 x 50	700
CRO0602S	6"	150	2-5/8" x 3"	114 x 97	5,75	5,75	190	66.7 x 76.2	PP	150 x 50	800
CRO0802S	8"	200	2-5/8" x 3"	114 x 97	5,75	5,75	241	66.7 x 76.2	PP	200 x 50	900